

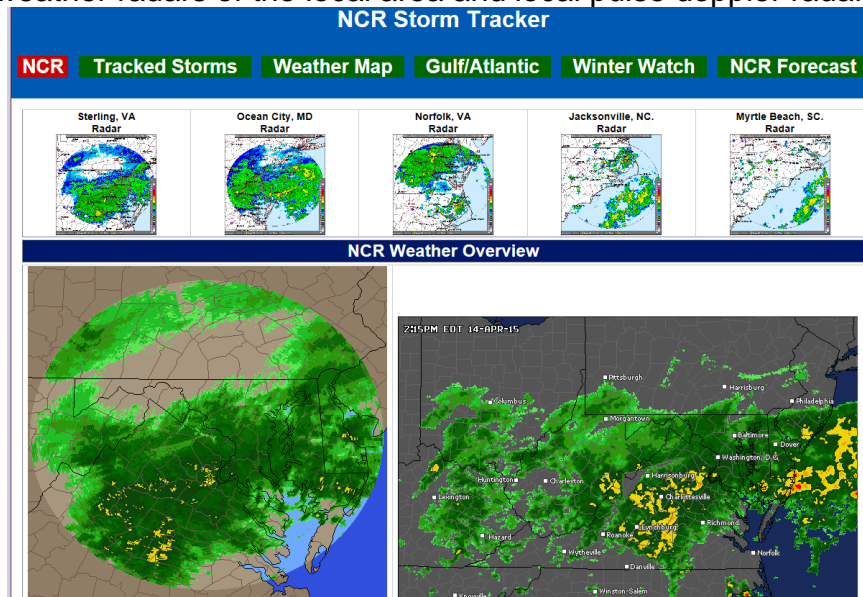
# NCR Fusion Supported WebEOC Boards

## NCR Enhanced Storm Tracker Board *Incident Independent*

This board provides a comprehensive overview of weather that may affect the NCR. The board is broken down into six tabs, each containing a set of weather related images. This is a view only board.

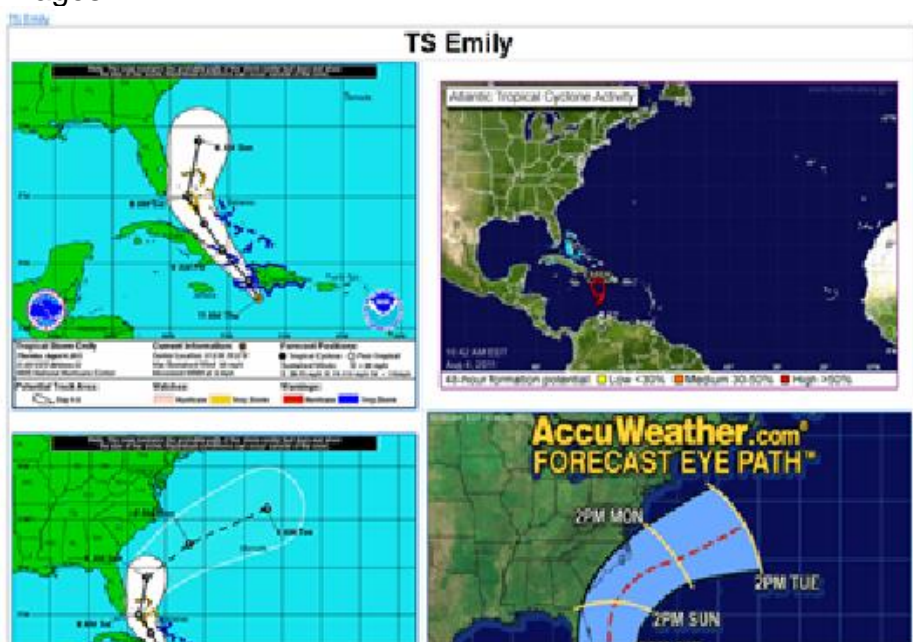
### NCR

Contains weather radars of the local area and local pulse doppler radar views



### Tracked Storms

Up to three named storms can be tracked, each with up to four individual weather related images



# NCR Fusion Supported WebEOC Boards

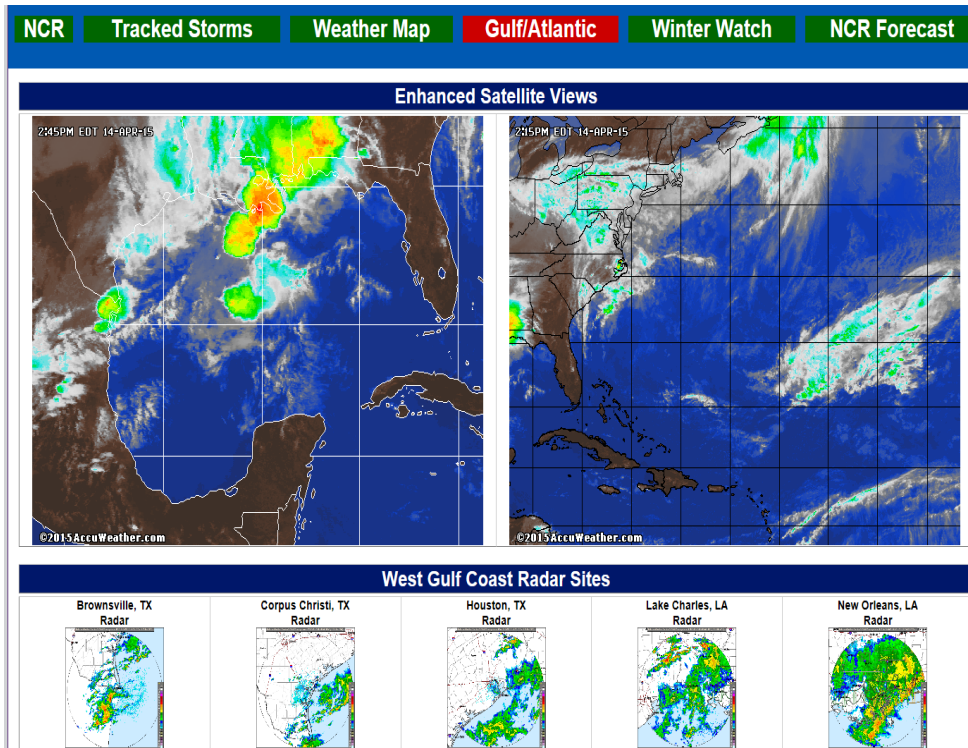
## Storm Pulse

Commercial weather service providing realtime imagery of active weather events



## Gulf/Atlantic

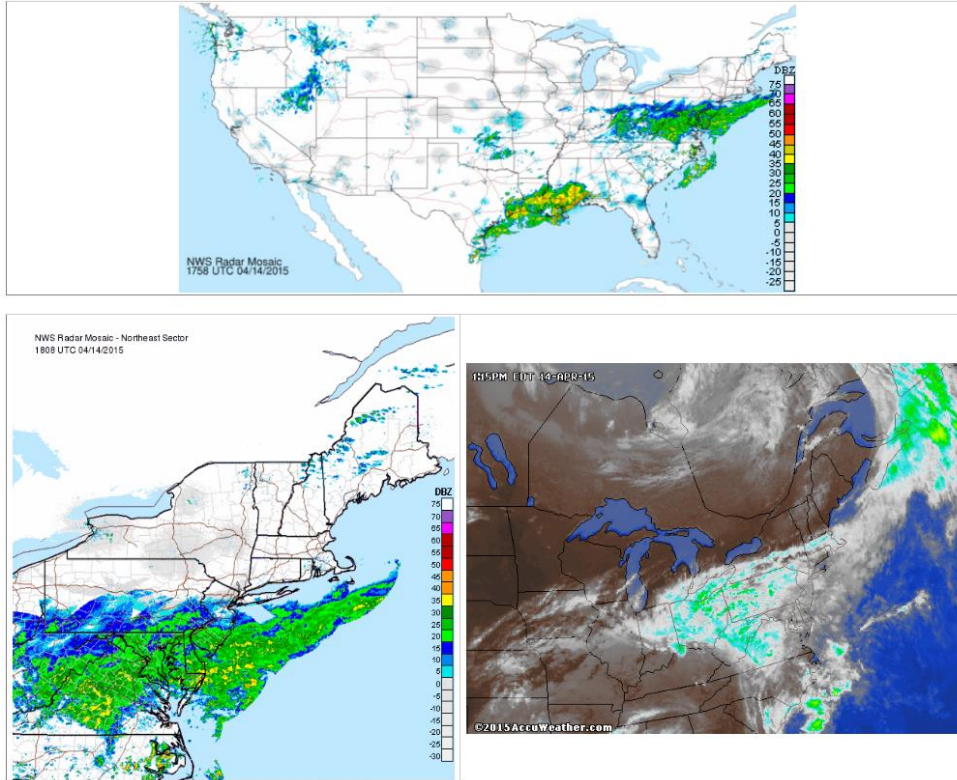
Contains real time weather radars and overview images of the Gulf



# NCR Fusion Supported WebEOC Boards

## Winter Watch

Weather maps/images focused to the Northeast to observe winter storms as they develop.



## Forecast

A dropdown selection for location to provide a forecast is displayed and once selected the forecast loads.

### Fairfax County Weather Forecast

Date	Icon	Description	Low	High	Pressure	Humidity	Wind Speed
Wed, 4/15		OVERCAST CLOUDS	44	60	1031	75 %	6
Thu, 4/16		HEAVY INTENSITY RAIN	46	53	1034	89 %	9
Fri, 4/17		LIGHT RAIN	52	63	1013	0 %	6
Sat, 4/18		LIGHT RAIN	51	68	1008	0 %	13
Sun, 4/19		SKY IS CLEAR	42	61	1017	0 %	11